

Color iControl

Online Color Quality Control and Formulation Software

Centralized Control and Management

With Color iControl, cross site locations can easily communicate and share color data while maintaining control of data and user rights. The account management system allows an administrator to create, modify, and manage groups of users and rights and permissions. Supervisors can hide controls, manage functionality by user, and assign a default desktop by User Group that includes program settings, permissions, database and path settings, screen layouts, and toolbars.

A Color iControl job contains everything a user needs to perform a specific function. When a job is sent to another user, it includes all contents, including settings, displays, screen layout, tolerances, colorants, and data. This functionality can be extended to create desktops tailored for different workflows and users. Every measurement, colorant, and collection in Color iControl is created with a unique Digital Signature that identifies that specific object for its entire life. This allows color data to be recognized by the software as it circulates within a workflow or supply chain. Digital Signatures maintain relationships between colors and allow submissions to be linked to their associated standards automatically.

Manage Data Access by User, Function, or Location

- Assign read or write permissions to the database based on security groups defined by regions and sub regions.
- Delegate user groups to a specific region and locale so measurements and data contain that information.
- Set user group permissions to allow access to local, regional, or all data.
- Manage or restrict access to a centralized database by User Group when recalling or writing data to the database

Connected and Traceable

- Connect using Remote Desktops, including Microsoft Terminal Services (Remote Desktop Services)™ or Citrix™, for simplified updates, remote application support, and easy expansion without local software installation.
- Select and format color data and direct it to a chosen location or application using multiple methods.
- Send data automatically as samples are measured for automatic integration into manufacturing and process management systems.
- Import and export in a wide range of industry standard formats, including CxF1, CxF2, CxF3, EXP, QTX, MIF, SMP, XML, PAL, TXT, DAT, MDB, and more to simplify the exchange of data with partners using alternative or legacy color related systems.

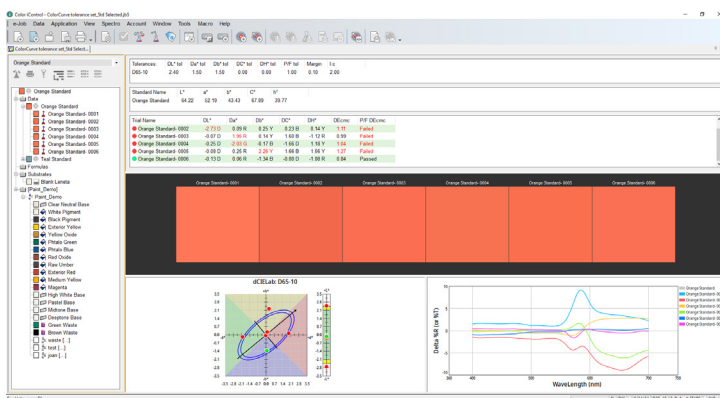
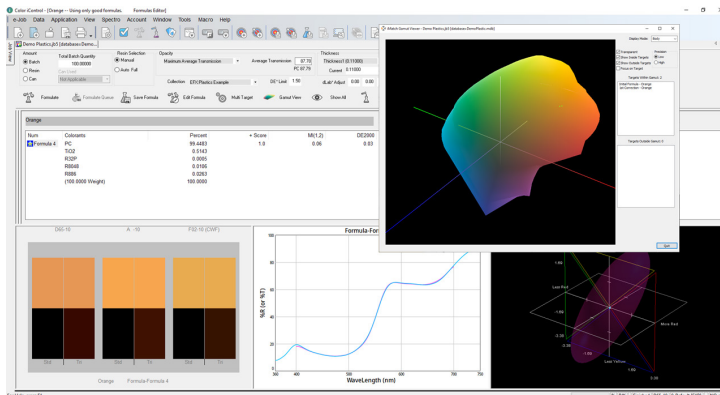
Server Requirements

Item	20 or Less Users	Over 20 Users
Operating System		
Version	Windows® Server 2012, 2016 (Standard or Enterprise Edition) Terminal Services (Remote Desktop Services)	Windows® Server 2012, 2016 64bit (Enterprise Edition) Terminal Services (Remote Desktop Services)
User Rights	Administrator rights for installation	Administrator rights for installation
Hardware		
Memory	4 GB RAM	200 MB RAM per User
Processor	3.2 GHz Pentium IV PC or higher	3.2 GHz Pentium IV PC or higher
Cache	8 MB	12 MB
Disk Capacity	500 GB	500 GB
Screen Resolution	1024 x 768	1024 x 768
Database		
For Color iQC / iMatch Only	MS SQL Server 2016 Standard	MS SQL Server 2016 Standard

Color iControl Service Offerings

X-Rite offers a complete suite of complimentary server products to ensure customers obtain the maximum benefit from their iControl system.

- Color iControl Support and Maintenance Contract: 1 year of premium phone and online support including software upgrades
- Color iControl “Start the Engine”: 3 days of support for system setup and configuration [settings, templates, custom toolbars, style sheets, remote output, etc.]



X-Rite is either a registered trademark or trademark of X-Rite, Incorporated in the United States and/or other countries. PANTONE®, PantoneLIVE and other Pantone trademarks are the property of Pantone LLC. All other trademarks or registered trademarks are the property of their respective owners. © X-Rite, Inc. 2022. All rights reserved. L10-701-EN (06/22)



xrite.com

General / Quality Control	Color iControl QC Professional	Color iControl Match
Job Driven Workflows	•	•
Intelligent Customization	•	•
Connectivity: Import / Export Capabilities	•	•
Data Management	•	•
NetProfiler Enabled	•	•
Traceability / Automatic Associations	•	•
Textured On-Screen Color	•	•
Image Capture / Association	•	•
Dynamic Image Viewer	•	•
Automatic [Intelligent] Tolerancing	•	•
Tolerance Warning Levels	•	•
Data Filtering	•	•
Networkable Database	•	•
Design System Links using CxF	•	•
User Defined Procedures	•	•
Visual Representation of Tolerances	•	•
Interactive Plots and Graphs	•	•
Remote File Output	•	•
Integrated Submit and Tagging	•	•
Context Sensitive Help	•	•
Password Protect Key Functions	•	•
Dynamic Database Viewer / User Defined Hierarchy	•	•
Palette Programs, Color Programs, Vendor Management	•	•
Cross Trial Color Differences	•	•
Data Output to XML, Style Sheets, Direct-to-Database	•	•
Configurable HTML View using XML Style Sheets	•	•
Color Coded Tags and Labels	•	•
Snap to Color	•	•
New CIE LED Illuminants (B1,B2,B3,B4,B5,BH1,RGB1,V1,V2)	•	•
Scorecarding	•	•
Updated Graphics: Color Plot, Trend, Spectral Graph	•	•
Instrument Connectivity	•	•
Formulation	Color iControl QC Professional	Color iControl Match
Measurement Modes		•
Tristimulus Matching		•
Formula Search		•
Spectral / Component Based Search and Correct		•
Multiple Target Matching		•
Gloss Compensation		•
Directional Formulation		•
Manual Formulation and Correction		•
Thickness / Opacity Control		•
User Definable Formula Output		•
Palette Finder		•
Configurable Recipe Scoring and Formula Sorting		•
Quick Corrections		•
Integrated Quality Control		•
Colorant Calibration or Primary Evaluation		•
Alternate Colorants		•
Searchable Formula Codes		•
Batch Recycle		•
Gamut Viewer		•
History Based Dynamic Correction Factors [Textiles]		•
Formulation Queuing		•
Assortment Quality / Performance Achievability		•
Fully Integrated Assortment and Data Preparation		•